

Businesses, Institutions,  
Schools & Hospitals

PA Act 101 requires Recycling in Commercial and Institutional Establishments in communities with a population of 5,000 or more.

Here's what to recycle:

Office Paper  
Corrugated Cardboard  
Aluminum Cans  
Leaf waste if applicable

\*\*\*

Local governments may require recycling by Ordinance for these and other materials in any size community.



*Lackawanna County's  
Environmental Office*

**570-963-2017**

**PROVIDES Technical Assistance on:**  
*Establishing Recycling Programs  
Waste Reduction Techniques  
Municipal Reports & Grants*

**PROVIDES Presentations to groups :**  
*Recycling at Home, School or Work  
Environmental Shopping  
Waste Reduction  
Watersheds*

The Electronics Recycling Law in Pennsylvania is **broken**. This can only be fixed in Harrisburg!



Please contact your state representative and ask them to fix it!



Leaves, brush, and grass can be composted.

Check with your town or municipality.  
*Branches must be two feet or less.*

*How to Contact the Lackawanna County  
Environmental Office*

Office: (570) 963 - 2017

Fax: (570) 963-2005

E-mail: [giovagnolib@lackawannacounty.org](mailto:giovagnolib@lackawannacounty.org)  
[shapiron@lackawannacounty.org](mailto:shapiron@lackawannacounty.org)  
Web: [www.recycling.lackawannacounty.org](http://www.recycling.lackawannacounty.org)

*Visit our website:*

[recycling.lackawannacounty.org](http://recycling.lackawannacounty.org)

*How to Recycle in Lackawanna  
County*



*Good planets are hard to find.  
Let's take care of this one.*



**Lackawanna  
County**

Commissioners  
Jerry Notarianni • Debi Domenick, Esq. • Chris Chermak

**So Much PAPER to Recycle!**  
**CHECK WITH YOUR TOWN to see if they can be recycled together or kept separate!**

**Newspaper, Magazines, Catalogs, and Phonebooks**



Please place in brown bag or a bundle.

**Office Paper**

Computer paper, mail, envelopes, etc.

Shredded paper can be placed in a brown paper grocery bag to contain it.



**Cardboard Boxes**

Includes heavy shipping boxes and light weight boxes (cereal and crackers-please throw out liners), paper towel rolls and pizza boxes.

Please **FLATTEN** boxes and bundle OR, place inside a larger box.



**Recycle Me!**



**We want your box, not your pizza**

**How To Prepare Recyclables**

1. Remove food/drink waste from containers by a quick rinse.
2. Discard liners from boxes.
3. Flattening plastic bottles, then putting caps back on, increases bin space and decreases potential litter.



4. Please don't break glass.

**THANK YOU** for making recycling work!

*Please check with your home town for specifics on recycling!*



© Can Stock Photo - csp14001545

**HELPFUL TIP:**

Plastic grocery or store bags cannot be put in your recycling bin. Please return them to the grocery store or even better go with reusable bags.

**Commingle Containers  
Bottles, Jars, Cans**

**Glass**

Bottles & Jars **ONLY**

Tops must be thrown away.

**NO windows, ceramics, drinking glasses, (etc.)**

**Cans**

**Aluminum & Steel (Tin)**

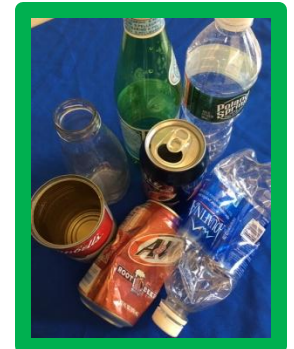
Beverage & Food containers

**Plastic**

**Bottles & Jars ONLY:**

Milk, juice, energy drinks, water, detergents/cleaners, soda...

**NO OTHER PLASTIC ITEMS!**



The following cannot be recycled:  
Straws, food containers, plastic cups, food wrappers, Styrofoam, paper or plastic dishes/cups/glasses, utensils, snack bags, plastic wrap, film.