

**PEMA**  
**Daily Operations Briefing**  
**April 21, 2020**  
**0830**

# General Brief

- **Significant Incidents - Last 24 Hours:**
  - **Statewide / Out of State**
    - ✓ **None**
  - **Eastern Area**
    - ✓ **None**
  - **Central Area**
    - ✓ **None**
  - **Western Area**
    - ✓ **Vehicle Accident - Jefferson**
    - ✓ **Water Rescue – Warren**

# Weather

## ➤ **PEMA Meteorologist:**

# Upcoming Special Events

EVENT	COUNTY	MUNICIPALITY	START	END	ATTENDANCE
South Street Spring Fest and Maifest (SEAR 3)	Philadelphia	City of Philadelphia	5/2/2020	5/2/2020	
Pittsburgh Marathon (SEAR 3)	Allegheny	City of Pittsburgh	5/3/2020	5/3/2020	
Broad Street Run (SEAR 3)	Philadelphia	City of Philadelphia	5/3/2020	5/3/2020	
Cinco de Mayo (SEAR 3)	Delaware	City of Chester	5/5/2020	5/5/2020	
Rittenhouse Row Spring Festival (SEAR 3)	Philadelphia	City of Philadelphia	5/16/2020	5/16/2020	
South 9 <sup>th</sup> Street Italian Market Festival (SEAR 3)	Philadelphia	City of Philadelphia	5/16/2020	5/16/2020	

Highlighted events indicates PEMA Staff involvement.

Update 03/11/2020 - ram

# EOC Status

## ➤ **Pennsylvania Emergency Management Agency**

- **State CRCC: Activated**

- ✓ Activation: 24 hours a day in support of COVID-19 response

## ➤ **Department of Health**

- **Public Health Command Center: Activated**

- ✓ Activation daily: In support of Opioid Proclamation

- **Department of Health Operations Center (DOC): Activated**

- ✓ Activation daily: Conducting public health and medical coordination regarding COVID-19 response

# Infrastructure Status

## ➤ Telephone Outage Reports:

- None

# Infrastructure Status

- **Major Road Closures/Restrictions:**
  - None

# Infrastructure Status

## ➤ Power Outage Reports:

- As of 0730, **208** customers are without power:
  - ✓ **Eastern – 50**
  - ✓
  - ✓ **Central – 152**
  - ✓ **Western – 6**



# Open Significant Incidents

## ➤ **Statewide/Out of State**

- None

## ➤ **Eastern**

- None

## ➤ **Central**

- None

## ➤ **Western**

- **Warren, Elk Township**

- ✓ An emergency crew responded for a vehicle that had driven into Allegheny Reservoir near Webbs Ferry Boat Launch
- ✓ The incident occurred in close proximity to the Pennsylvania / New York line
- ✓ A fire boat from Frewsburg Fire Department (NY) was dispatched with local units
- ✓ The search was suspended for the night and will resume in daylight hours

# Closed Significant Incidents

## ➤ **Statewide/Out of State**

- None

## ➤ **Eastern**

- None

## ➤ **Central**

- None

## ➤ **Western**

### • **Jefferson, Pine Creek Township**

- ✓ An accident involving a tractor trailer and a PennDOT dump truck occurred in the area of U.S. Route 322 and Knox Dale Road
- ✓ The tractor trailer was hauling manure and side-swiped the PennDOT truck
- ✓ Driver of the PennDOT vehicle was flown to UPMC Altoona for unknown injuries

# Long Term Significant Incidents

Type of Incident	Area	County/ Municipality	Start Date	Description	Current Update
CRCC Activation	Statewide	PA - Statewide	1/22/20	On 3/6/20, the Governor issued a Proclamation of Disaster Emergency for PA in response to COVID-19; the CRCC is activated 24 hours a day; The Department of Health Operations Center is activating daily; 3/13/20 – The President has issued an Emergency Declaration for all states; Governor Wolf ordered PA schools to close beginning 3/16/20; all 67 county EOC's are now activated; 3/30/20 – 4506-DR Major Disaster Declaration declared; 4/1/20 – A statewide stay at home order is in effect until 4/30/20; The Secretary of Health expanded safety measures for businesses permitted to maintain in-person operations; this includes the required wearing of masks by employees and any customers while on the premises;	

# Logistics

## PEMA Resource Status

Resource	Resource Type	Status	Remarks
R-113	F550 Prime Mover	Deployed	IMT support in Montgomery County
RT-112	Command Trailer	Deployed	IMT support in Montgomery County
RT-13 & RT-17	18' Equipment Trailers	Deployed	NEPA CBTS Support
RT-114	Command Trailer	Deployed	NEPA CBTS Support
RT-118	32' Equipment / Support Trailer	Deployed	NEPA CBTS Support
RGT-110	45Kw Generator	Deployed	NEPA CBTS Support
RGT-137	175Kw Generator	Deployed	NEPA CBTS Support
RLT-115	Light Tower	Deployed	NEPA CBTS Support
R3	F550 Prime Mover	Deployed	NEPA CBTS Support

# Logistics

- **Mission Requests/Task Assignments** (Non-COVID19-related)
  - **None**
  
- **EMAC Requests** (Non-COVID19-related)
  - **None**

# Operations Briefing



## pennsylvania

EMERGENCY MANAGEMENT AGENCY

**PEMA** helps communities and citizens mitigate against, prepare for, respond to, and recover from emergencies including natural disasters, acts of terrorism, or other human-made disasters. PEMA supports county emergency management agencies by coordinating and engaging the whole community including federal and state partners, volunteer organizations involved in disasters, private sector business community and citizens.

**PEMA**  
**COVID-19**  
**Operational Brief**  
**April 21, 2020**

# Incident Support Staff

- Senior State Official – Randy Padfield
- Incident Support Manager – Tim Sevison
- Situational Awareness Section Chief – Kirsten Cohick
- Planning Support Section Chief – Paul Marion
- Center & Support Section Chief – Jen Stultz
- Resource Support Section Chief – Bob Meinert
- CRCC Coordinator – Rob Then



# Leader's Intent

- Continue the development of plans and decision tools to support AREP planning efforts & county response.

# General Information/Expectations

- Safety Message
  - Prevention
  - Emergency exits/meeting location
  - Temperature scanning when entering building
  - Please email special dietary needs daily to Shanta Green at [shagreen@pa.gov](mailto:shagreen@pa.gov)
- Sign-in/Sign-out
- Meetings 230 WebEOC
- If you need to schedule meetings, please see Victoria Neve or Dave Daniels.
- When in meetings, please sit 6 feet apart.
- When calling in to the brief – enter participant number and your agency
- Taking videos or photos inside the CRCC or the DOC is expressly forbidden.

# Situation Update

Action	Date
DOH DOC Activation	February 2, 2020
CRCC Activation	March 4, 2020
Governor's Proclamation	March 6, 2020
FEMA Disaster Declaration (FEMA 4506-DR-PA)	March 30, 2020
School Shut Down Order	March 16, 2020
Statewide Shut Down Order	April 1, 2020

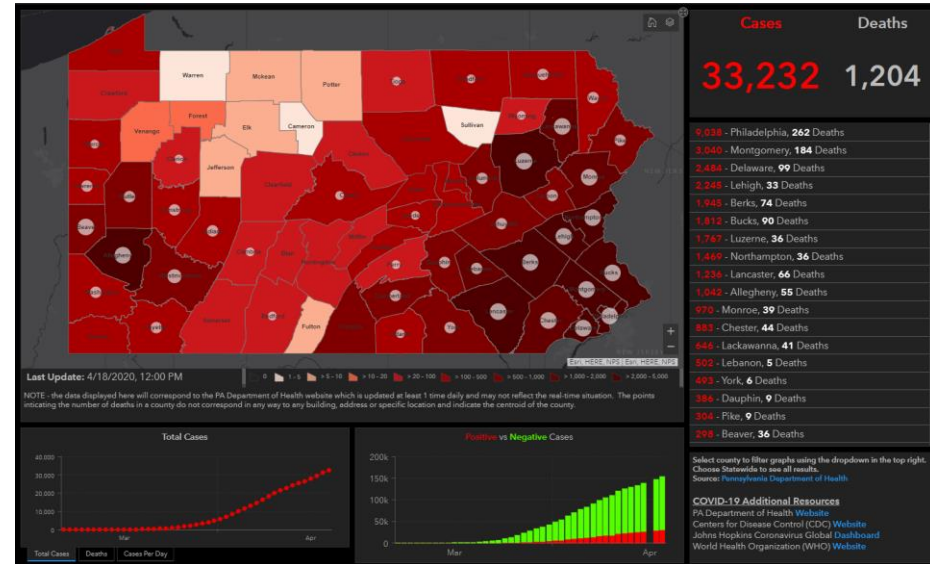
# Stay At Home Order



On April 20, 2020, Governor Wolf extended the statewide stay-at-home order through May 8, 2020.

# COVID-19 Situation Update

Philadelphia – 9,038 (+274) (262)	Lawrence – 59 (+0) (5)
Montgomery – 3,040 (+127) (184)	Mercer – 59 (+0) (1)
Delaware – 2,484 (+79) (99)	Indiana – 53 (+2) (4)
Lehigh – 2,245 (+42) (33)	Montour – 48 (+0)
Berks – 1,945 (+47) (74)	Lycoming – 40 (+3)
Bucks – 1,812 (+90) (90)	Armstrong – 38 (+0) (2)
Luzerne – 1,767 (+26) (36)	Snyder – 28 (+1) (1)
Northampton – 1,469 (+28) (36)	Union – 28 (+1)
Lancaster – 1,236 (+48) (66)	Bradford – 25 (+0) (1)
Allegheny – 1,042 (+7) (55)	Greene – 25 (+1)
Monroe – 970 (+7) (39)	Mifflin – 20 (+0)
Chester – 883 (+44) (44)	Perry – 20 (+0) (1)
Lackawanna – 646 (+10) (41)	Cambria – 19 (+0) (1)
Lebanon – 502 (+18) (5)	Somerset – 19 (+1)
York – 493 (+12) (6)	Clarion – 18 (+0) (1)
Dauphin – 386 (+18) (9)	Wyoming – 17 (+0) (1)
Pike – 304 (+3) (9)	Crawford – 16 (+0)
Beaver – 298 (+10) (36)	Bedford – 15 (+0) (1)
Westmoreland – 286 (+2) (16)	Blair – 14 (+1)
Schuylkill – 267 (+6) (5)	Tioga – 14 (+0) (1)
Columbia – 208 (+6) (7)	Huntingdon – 13 (+0)
Cumberland – 186 (+4) (4)	Clearfield – 11 (+0)
Butler – 161 (+0) (5)	Clinton – 11 (+0)
Carbon – 144 (+4) (9)	Forest – 7 (+0)
Franklin – 115 (+4)	Venango – 6 (+0)
Adams – 85 (+5) (1)	Potter – 4 (+0)
Wayne – 85 (+1) (3)	McKean – 4 (+0)
Washington – 83 (+1) (2)	Jefferson – 3 (+1)
Centre – 73 (+0) (1)	Elk – 2 (+0)
Northumberland – 73 (+6)	Fulton – 2 (+0)
Juniata – 72 (+2)	Cameron – 1 (+0)
Fayette – 67 (+1) (3)	Sullivan – 1 (+0)
Susquehanna – 66 (+3) (4)	Warren – 1 (+0)
Erie – 60 (+2)	



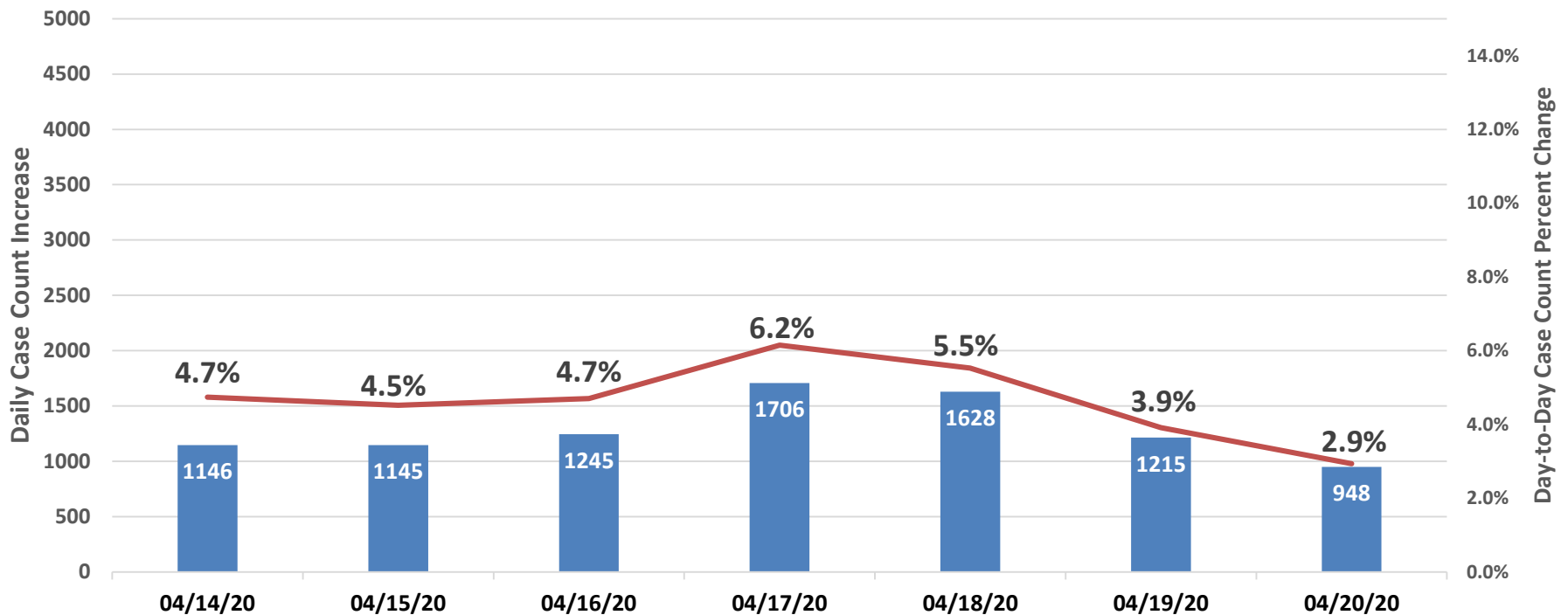
Total Cases: **33,232 (+948)**

Total Deaths: **1,204 (+92)**  
(Per PADOH Website 4/20/20)

# COVID-19 Situation Update

## Pennsylvania COVID-19 Positives

One Week Case Count Monitoring



The April 20th COVID-19 case count of 948 was the lowest total for new cases in a single day since March 31.

# COVID-19 Situation Update

- On April 20, a protest of the COVID-19-related business restrictions took place in front of the State Capitol Building in Harrisburg by the group ReOpenPA, as well as other areas throughout the Commonwealth.
- As of April 20, the Montgomery County CBTS has conducted **1,178 (+247)** COVID-19 tests at the Montgomery County Community College since testing began at the site on April 15.
- On April 20, the Mohegan Sun Arena CBTS (Northeast PA) tested 49 symptomatic first responders and health care workers for COVID-19.
- On April 20, state and local surge planning efforts resulted in the first patient admission to the Temple Liacouras Center Alternate Care Site in Philadelphia.
- On April 20, Pennsylvania State Police reported that the State Police Spring and Summer Youth Camps have been canceled for this year.
- On April 20, Governor Tom Wolf announced three actions including online sales of vehicles, which will be enable by the signing of SB 841, restart of construction projects statewide starting Friday, May 8, and curbside pickup of wine and spirits at select Pennsylvania Liquor Control Board locations.
- The PEMA County Hub site, a COVID-19 information website for all Pennsylvania counties, is now live and can be accessed here: <https://covid-19-county-support-pema.hub.arcgis.com/> (access information has been emailed to all counties).

# Critical Information

- Multiple testing sites are reporting they will be closed today due to the inclement weather moving across the commonwealth.



# Current Lines of Effort

## State-Supported Lines of Effort (current as of April 21, 2020 0700)

Mission	Status	Current Activities	Participants	Point of Contact(s)
<b>Mohegan Sun Community Based Testing Site (CBTS)</b>	Ongoing	<ul style="list-style-type: none"> <li>Tested symptomatic first responders and healthcare workers - 49</li> <li>Went live 20 APR 2020</li> </ul>	DMVA, DOH, PEMA, PA IMT, Luzerne Co, DHS	Dave Boucher (PEMA)
<b>Montgomery County Community Based Testing Site (CBTS)</b>	Ongoing	<ul style="list-style-type: none"> <li>Relocated to Montgomery Co. Community College</li> <li>Went live 15 Apr 2020</li> </ul>	DMVA, PA IMT, Montgomery Co.	Kevin P. Nelson (PA IMT)
<b>Glen Mills Alternate Care Site (ACS)</b>	Ongoing	<ul style="list-style-type: none"> <li>Cots set up</li> <li>Working on wraparound services &amp; clinical staffing</li> </ul>	DMVA, DOH, PEMA, DGS, Delaware Co.	Tom Morgan (Delaware Co EMA)
<b>East Stroudsburg University Alternate Care Site (ACS)</b>	In-Progress	<ul style="list-style-type: none"> <li>L&amp;I reduced the number of allowable beds to 88.</li> <li>Working contracts for wraparound services</li> <li>Staffing using PANG (Title 32) &amp; Urban Augmentation Medical Task Forces (UAMTF) (Title 10)</li> </ul>	DMVA, DOH, PEMA, DGS, ESU, Monroe Co., Lehigh Valley Health Network	Ken Long (ESU) TBD (DOH) Bruce Henry (Monroe Co EMA)
<b>Temple Liacouras Alternate Care Site (ACS)</b>	Ongoing	<ul style="list-style-type: none"> <li>Sourcing admin staff and additional clinical staff</li> <li>180 beds on site</li> <li>Staffing using UAMTF (Title 10)</li> <li>Open for limited patients</li> </ul>	DMVA, DOH, PEMA, DGS, City of Philadelphia	Christopher Baldini (Phila. EMA) Sam Malone (Phila. EMA)
<b>Pittsburgh Convention Center Alternate Care Site (ACS)</b>	Planning Stage	<ul style="list-style-type: none"> <li>Site contract finalized 17 Apr 2020</li> </ul>	DMVA, DOH, PEMA, DGS, Allegheny Co.	Matt Brown (Allegheny Co EMA)
<b>Feeding Missions</b>	Ongoing	<ul style="list-style-type: none"> <li>Supporting local distribution at several sites statewide</li> </ul>	DHS, PANG, Civil Air Patrol	Christine Heyser (PA DHS)

# Medical Surge Resources

Current as of:  
20 Apr 2020  
1700

MSEC- Medical Supplies & Equipment Cache	MMSS- Mobile Medical Surge System	MESS- Mobile Emergency Support System	CCP- Casualty Collection Point	PA SMAT- State Medical Assistance Team
Total: 18	Total: 6	Total: 2	Total: 6	Total: 2
4 on stand by@ David L. Lawrence	N/A	N/A	N/A	N/A
4 deployed, 1 on stand by @ East Stroudsburg	N/A	N/A	N/A	N/A
1 Deployed @ Bucks County	Partial use (1/3) of 1 System	N/A	N/A	Equipment Only Deployed
Available: 8	Available: 5 2/3	Available: 2	Available: 6	Available: 1 full system 1 Personnel Only

No new information as of 4/19/2020

# Fatality Management Resources

Current as  
of:  
20 Apr 2020  
1700

Commonwealth Purchased Refrigerated Trailers	County Coroner Refrigerated Trailers
Total: 33	Total: 9
Generators: 28/33 (If needed from Bestline)	Deployed: 0
Refrigerated Units - Flat: 23 (all delivered)	Available: 9
Refrigerated Units - Wheeled: 10 (None delivered yet; arriving on 4/20/20)	Location- Armstrong, Allegheny, Bedford, Cumberland, Indiana, Lycoming, Mercer, Northampton, and Westmoreland.

No new information as of 4/19/2020

# Fatality Management Resources

Current as  
of:  
20 Apr 2020  
1700

<b>Disaster System</b> Power Supply & Storage Trailer holds 16 PAX (PA Coroners Association Trailers)	<b>PA Guard Assets</b> MIRCS Mobile Integrated Remains Collection System Holds 12 PAX	<b>PA Guard Assets</b> MTRCS Multi-Temperature Refrigerated Container System (Food Storage)
Total: 4	Total: 2	Total: 15
Deployed: 0	Deployed: 0	Deployed: 0
Available: 4	Available: 2	Available: 12
Location - Blair, Cumberland, Lycoming and Northampton (Per DOH)	Location- Pittsburgh	Out of Service: 3

No new information as of 4/19/2020

# Ventilator Resources

Current as  
of:  
20 Apr 2020  
1700

## Emergency Ventilators

Total: 158

Deployed: 0

Available: 158

Location:

98 Dept of Health - Harrisburg  
30 SMAT – Indiana  
30 SMAT – Norristown

## Intensive Care Vents

Total: 24

Deployed: 0

Available: 8

Getting Serviced: 16

Location – USMed-Equip  
Biomedical Service Lititz Pa

No new information as of 4/19/2020

# COVID-19 Planning Update

- **Current Planning:**

- Community Based Testing Site at the Mohegan Sun Arena in Luzerne County begins testing first responders on Monday 04/20/2020
- Decontamination and sterilization of N-95 masks (Battelle)
- Business Reopening Strategy for North-Central PA
- Joint planning effort with AG/DHS for potential food shortages.
- Supporting DOH and DMVA with utilization of DoD assets.

- **Future Planning:**

- Commonwealth Support Plan refresh (every Sunday)
- Title 10 & Title 32 Medical Support Planning
- Collaborating with DOH with long-term vaccination plans
- Additional May/June food supply chain shortages

# COVID-19 Logistics

- **1,409** – Mission Requests
  - **417** – In Progress
  - **992** – Closed

# Federal/FEMA Missions

Mission Request	Status	Assigned To
<b>ACS Staffing (DOD)</b>	Staged	PA
<b>Decontamination System</b>	Requested / Ordered	FEMA R3
<b>Medical/Test Supplies</b>	Requested	NRCC
<b>Pharmacy Cache X2</b>	One received 16 APR 20; awaiting arrival of second cache date TBD	PA DOH/US HHS
<b>USACE Site Assessments</b>	Completed as of (13 APR 20)	FEMA R3
<b>USACE Support for ACS TF</b>	Ordered / Approved	FEMA R3
<b>Body Bags (7,500)</b>	Received (14 APR 20)	PA
<b>Cots (500)</b>	Ordered (14 APR 20)	NRCC
<b>FMS Site – Glen Mills</b>	Complete	PA
<b>FMS Site – Philadelphia</b>	Complete	PA
<b>Meals (Two requests / total of 728,270 meals)</b>	Complete	PA
<b>PPE Manufacturing</b>	Requested	FEMA R3



# State Non-PPE COVID-19 Missions

Mission Request	Status	Assigned To
<b>Food Distribution</b>	Ongoing	DHS/DMVA
<b>CBTS Support – Montgomery</b>	Ongoing	PA IMT/DMVA
<b>Medical Detachment</b>	On Hold (County)	DMVA
<b>Mortuary Team</b>	Pending	DMVA
<b>CBTS Support – Northeast PA</b>	In Progress	DMVA/PAIMT
<b>Alternate Care Site Support – Monroe County</b>	In Progress	DOH/DMVA/PEMA
<b>Warehousing Support</b>	Ongoing	Dept. of Ag/DGS
<b>Food Bank Support – Allegheny</b>	Ongoing	DMVA
<b>Various Planning Support</b>	Ongoing	DMVA/DCNR/PAIMT
<b>Various Alternate Housing for High-Risk/Isolation</b>	Ongoing	DHS
<b>Food Bank Support – Bucks</b>	In Progress	CAP
<b>Corrections Facility Support - Pike</b>	In Progress	DOC

# State Non-PPE COVID-19 Missions

Mission Request	Status	Assigned To
<b>Staff Assistance for Labor &amp; Industry</b>	Closed (4/19/20)	OA
<b>Facility Support (Staging)</b>	In Progress	DMVA
<b>Facility Staff Support (Southeast Veterans Center)</b>	In Progress	DMVA
<b>Cold Storage Facility (Clinton)</b>	In Progress	PASSHE
<b>Medical Staff Isolation Housing (Columbia)</b>	In Progress	PASSHE
<b>Quarantine Housing (Erie)</b>	In Progress	PASSHE
<b>Food Pantry Support (Lawrence)</b>	In Progress	CAP
<b>Facility Staff Support (Delaware)</b>	In Progress	DMVA

# COVID-19 PABEOC Update

- Shared with PABEOC Trusted Partners the:
  - Information encouraging Pennsylvanians to use electronic filing options for PA tax returns during COVID-19 pandemic
  - FEMA Advisory - Coronavirus (COVID-19) Pandemic: Best Practices
  - Announcement of Online Vehicle Sale Process, Construction Restart Date, PLCB Curbside Pick Up
  - Governor Wolf's signing of Senate Bill 841 to provide flexibility to local governments and businesses
  - Governor Wolf and Secretary of Health's extend statewide Stay-at-Home Order until May 8
- Coordinated final details with DOH Logistics, DHS, DOC and PSP for donation from ExxonMobil for 1,200 gallons of medical grade liquid hand sanitizer.
- Working initial details of large PPE donation from Johnson & Johnson of surgical/procedural face masks, face shields, large volume of medical grade hand sanitizer and bio-hazard bags.
- Outreach will occur today to better qualify a handful of other potential donation offers recently received.
- Although not yet publicized, the PA Critical Donations Portal is active and has received some donation offers through the system.
- Please send donation offers to [pacriticaldonations@pa.gov](mailto:pacriticaldonations@pa.gov).

# Recovery Update

- Long-Term Recovery Task Force held its second meeting on Monday 4/20
- Review/Baseline/What's been accomplished to date
  - Resources and Entry Points
  - Recovery Continuum, Recovery Plan, RSFs, Actions
  - Expectations of RSFs (Primary & Support Roles)
- Recovery Support Framework/Function Discussions
  - Items via Governor's Press Release Friday, April 17, 2020
  - Initiatives and Information per interviews and submissions by RSFs
  - Funding streams
- FEMA Region III Recovery Office Comments
- Recovery Support Function Work Sheets and RSF Facilitator Guides continued to be commented on by applicable state agency staff
- FEMA/PEMA Public Assistance and SBA Recovery operations continue

# Agencies Activated

## Agency

Department of Health

Department of Aging

Department of  
Banking

Dept. of Community  
and Economic  
Development

Department of  
Corrections

Department of  
Education

Department of  
Agriculture

Department of Drug  
and Alcohol Programs

Insurance Commission

## Agency

Dept. of Military and  
Veterans Affairs

Department of Human  
Services

PA State Police

Department of  
Transportation

PA Office of Homeland  
Security

Public Utility Commission

Department of  
Environmental Protection

Department of General  
Services

Office of Administration

## Agency

Turnpike Commission

Department of Labor and  
Industry

American Red Cross

U.S. Army Corps of  
Engineers

FEMA

FEMA SEPLO

# Resources

- [PA DOH Coronavirus Page](#)
- [CDC Coronavirus Page](#)
- [WHO Coronavirus Page](#)
- [Johns Hopkins Dashboard](#)
- [PEMA WebEOC](#)
- [PEMA Resource Request Documents](#)
- [PA DCED Page](#)
- [FEMA Rumor Control Page COVID-19](#)
- [PA Business EOC Dashboard](#)